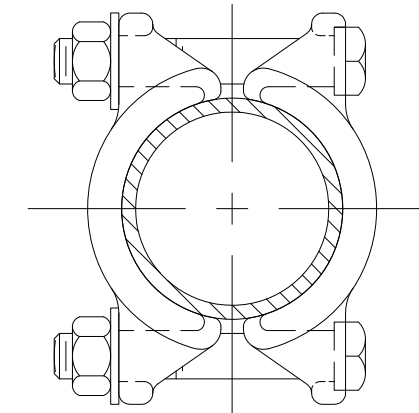
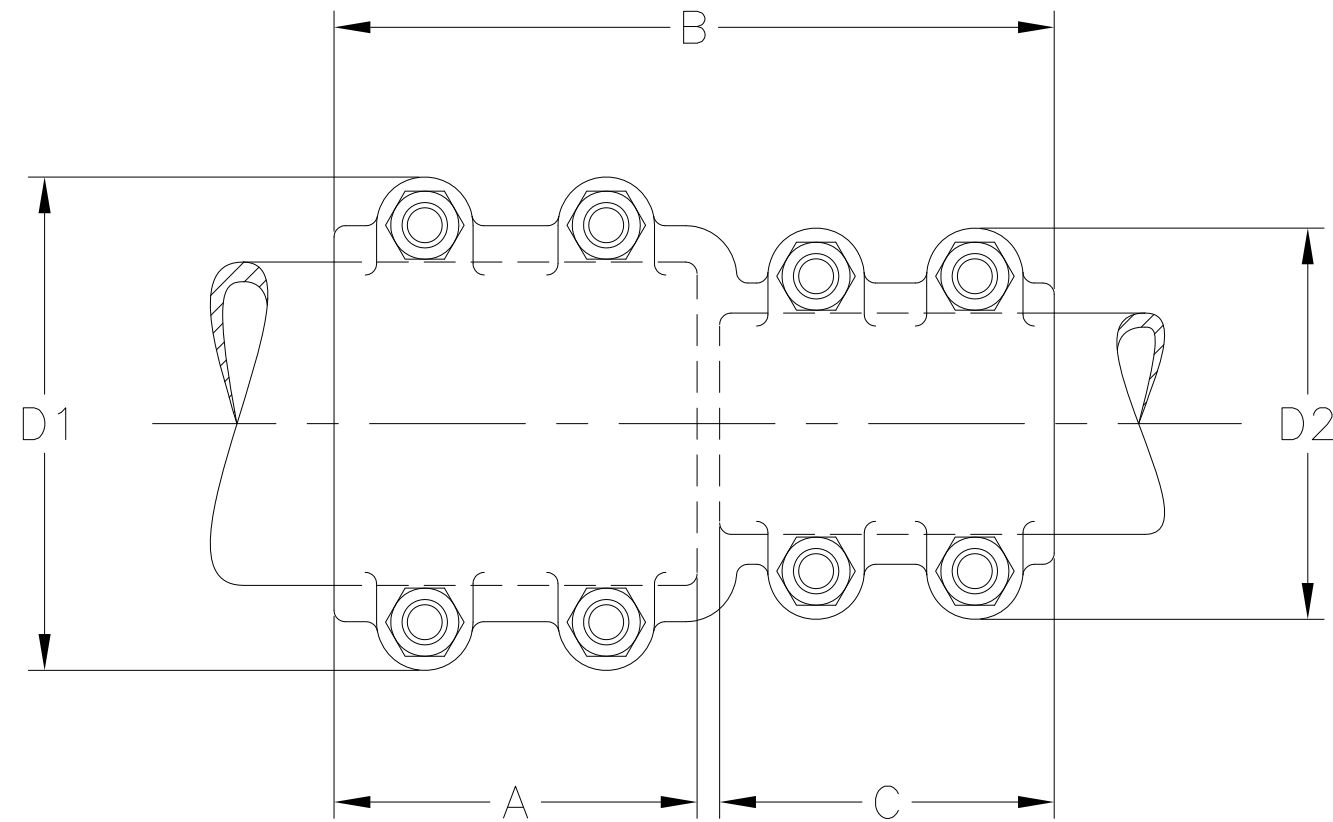
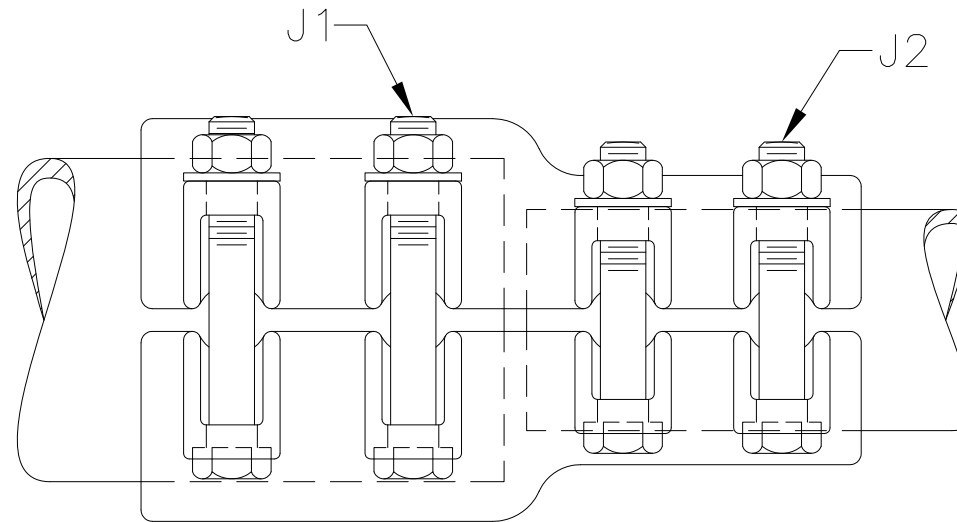


MAIN



TAP




NOTES:


1. MATERIAL: CASTINGS: 356-T6 ALUMINUM ALLOY
HARDWARE: ALUMINUM ALLOY
2. DURING ASSEMBLY, POSITION HEAD OF BOLTS IN HEX HEADS
3. CONTACT SEALANT IS RECOMMENDED
4. DIMENSIONS IN INCHES.

69043	3/27/2017	HG	HG	ANDERSON®	HUBBELL® POWER SYSTEMS
EC #	DATE	CHG BY	RESP ENG		
DESC OF DWG: UPDATE DRAWING TO AUTOCAD FILE				<small>CONFIDENTIAL: THIS DRAWING AND ITS CONTENTS ARE CONFIDENTIAL AND THE EXCLUSIVE PROPERTY OF HUBBELL POWER SYSTEMS. NO PUBLICATION, DISTRIBUTION OR COPIES MAY BE MADE WITHOUT THE WRITTEN CONSENT OF HUBBELL POWER SYSTEMS. HUBBELL POWER SYSTEMS UNPUBLISHED ALL RIGHTS RESERVED UNDER THE COPYRIGHT LAWS.</small>	
REASON (S) FOR CHANGE: --					
DISPOSITION OF MAT'L: --					
TITLE ALUMINUM STRAIGHT COUPLER TUBE TO TUBE		SIZE C	DWG NO. C-1338	CAT / PART / ASSY NO. SEE TABLE	REV 17
DO NOT SCALE THIS DRAWING		DRN BY WDS	DATE 1/19/57	SHEET 1 of 3	

CATALOG NUMBER	IPS CONDUCTOR SIZE		DIMENSIONS IN INCHES						
	MAIN	TAP	A	B	C	D1	D2	J1	J2
ASTT-0606	0.750	0.750	2.500	5.250	2.500	3.000	3.000	0.500	0.500
ASTT-1006	1.000	0.750	2.750	5.500	2.500	3.250	3.000	0.500	0.500
ASTT-1010	1.000	1.000	2.750	5.750	2.750	3.250	3.250	0.500	0.500
ASTT-1206	1.250	0.750	3.000	5.625	2.500	3.625	3.000	0.500	0.500
ASTT-1210	1.250	1.000	3.000	6.000	2.750	3.625	3.250	0.500	0.500
ASTT-1212	1.250	1.250	3.000	6.250	3.000	3.625	3.625	0.500	0.500
ASTT-1406	1.500	0.750	3.250	6.125	2.500	3.813	3.000	0.500	0.500
ASTT-1410	1.500	1.000	3.250	6.250	2.750	3.813	3.250	0.500	0.500
ASTT-1412	1.500	1.250	3.250	6.500	3.000	3.813	3.625	0.500	0.500
ASTT-1414	1.500	1.500	3.250	6.750	3.250	3.813	3.813	0.500	0.500
ASTT-2006	2.000	0.750	3.500	6.375	2.500	4.313	3.000	0.500	0.500
ASTT-2010	2.000	1.000	3.500	6.750	2.750	4.313	3.250	0.500	0.500
ASTT-2012	2.000	1.250	3.500	6.875	3.000	4.313	3.625	0.500	0.500
ASTT-2014	2.000	1.500	3.500	7.125	3.250	4.313	3.813	0.500	0.500
ASTT-2020	2.000	2.000	3.500	7.250	3.500	4.313	4.313	0.500	0.500
ASTT-2406	2.500	0.750	3.750	6.750	2.500	4.813	3.000	0.500	0.500
ASTT-2410	2.500	1.000	3.750	6.875	2.750	4.813	3.250	0.500	0.500
ASTT-2412	2.500	1.250	3.750	7.125	3.000	4.813	3.625	0.500	0.500
ASTT-2414	2.500	1.500	3.750	7.500	3.250	4.813	3.813	0.500	0.500
ASTT-2420	2.500	2.000	3.750	7.375	3.500	4.813	4.313	0.500	0.500
ASTT-2424	2.500	2.500	3.750	7.880	3.750	5.188	5.188	0.625	0.625
ASTT-3010	3.000	1.000	4.000	7.188	2.750	5.438	3.250	0.500	0.500
ASTT-3012	3.000	1.250	4.000	7.438	3.000	5.438	3.625	0.500	0.500
ASTT-3014	3.000	1.500	4.000	7.688	3.250	5.438	3.813	0.500	0.500
ASTT-3020	3.000	2.000	4.000	7.313	3.500	5.438	4.313	0.500	0.500
ASTT-3024	3.000	2.500	4.000	8.250	3.750	5.438	4.813	0.500	0.500
ASTT-3030	3.000	3.000	4.000	8.250	4.000	5.813	5.813	0.625	0.625
ASTT-3412	3.500	1.250	4.250	7.750	3.000	5.938	3.625	0.500	0.500
ASTT-3414	3.500	1.500	4.250	8.063	3.250	5.938	3.813	0.500	0.500
ASTT-3420	3.500	2.000	4.250	8.000	3.500	5.938	4.313	0.500	0.500
ASTT-3424	3.500	2.500	4.250	8.563	3.750	5.938	4.813	0.500	0.500

69043	3/27/2017	HG	HG	ANDERSON	 HUBBELL POWER SYSTEMS								
EC #	DATE	CHG BY	RESP ENG	TITLE ALUMINUM STRAIGHT CONNECTOR TUBE TO TUBE									
DESC OF DWG: SEE PAGE 1				CONFIDENTIAL: THIS DRAWING AND ITS CONTENTS ARE CONFIDENTIAL AND THE EXCLUSIVE PROPERTY OF HUBBELL POWER SYSTEMS. NO PUBLICATION, DISTRIBUTION OR COPIES MAY BE MADE WITHOUT THE WRITTEN CONSENT OF HUBBELL POWER SYSTEMS. HUBBELL POWER SYSTEMS UNPUBLISHED ALL RIGHTS RESERVED UNDER THE COPYRIGHT LAWS.				SIZE	DWG NO.	CAT / PART / ASSY NO.	REV		
REASON (S) FOR CHANGE: --				HUBBELL POWER SYSTEMS UNPUBLISHED ALL RIGHTS RESERVED UNDER THE COPYRIGHT LAWS.				C	C-1338	SEE TABLE	17		
DISPOSITION OF MAT'L: --				DO NOT SCALE THIS DRAWING				DRN BY	WDS	DATE	1/19/57	SHEET	2 of 3

CATALOG NUMBER	IPS CONDUCTOR SIZE		DIMENSIONS IN INCHES						
	MAIN	TAP	A	B	C	D1	D2	J1	J2
ASTT-3430	3.500	3.000	4.250	8.750	4.000	6.313	5.813	0.625	0.625
ASTT-3434	3.500	3.500	4.250	8.750	4.250	6.313	6.313	0.625	0.625
ASTT-4014	4.000	1.500	4.250	8.000	3.250	6.563	3.813	0.500	0.500
ASTT-4020	4.000	2.000	4.250	8.188	3.500	6.563	4.313	0.500	0.500
ASTT-4024	4.000	2.500	4.250	8.438	3.750	6.938	5.188	0.625	0.625
ASTT-4030	4.000	3.000	4.250	8.750	4.000	6.938	5.813	0.625	0.625
ASTT-4034	4.000	3.500	4.250	8.938	4.250	6.938	6.313	0.625	0.625
ASTT-4040	4.000	4.000	4.250	8.750	4.250	6.938	6.938	0.625	0.625
ASTT-1004	1.000	0.500	2.750	5.625	2.500	3.250	2.688	0.500	0.500
ASTT-0404	0.500	0.500	2.500	5.375	2.500	2.688	2.688	0.500	0.500
ASTT-5050	5.000	5.000	5.000	10.250	5.000	7.938	7.938	0.625	0.625
ASTT-6060	6.000	6.000	6.000	12.000	6.000	9.063	9.063	0.625	0.625
ASTT-4012	4.000	1.2500	4.250	7.750	3.000	6.563	3.625	0.500	0.500
ASTT-6034	6.000	3.500	6.000	10.750	4.250	9.063	6.313	0.625	0.625
ASTT-5030	5.000	3.000	5.000	9.625	4.000	7.938	5.813	0.625	0.625
ASTT-5040	5.000	4.000	5.000	9.875	4.250	7.938	6.938	0.625	0.625
ASTT-6030	6.000	3.000	6.000	10.750	4.000	9.063	5.438	0.625	0.500
ASTT-4444	4.500	4.500	4.500	9.250	4.500	7.313	7.313	0.625	0.625
ASTT-6020	6.000	2.000	6.000	10.125	3.500	9.063	4.313	0.625	0.500
ASTT-80MM70MM	80MM	70MM	4.000	8.250	3.750	5.438	4.813	0.500	0.500
ASTT-2470MM	2.500	70MM	3.750	7.750	3.750	5.313	5.313	0.625	0.625
ASTT-2450MM	2.500	50MM	3.750	7.375	3.500	4.188	4.313	0.500	0.500

69043	3/27/2017	HG	HG	ANDERSON®	 HUBBELL® POWER SYSTEMS
EC #	DATE	CHG BY	RESP ENG		
DESC OF DWG: SEE PAGE 1				CONFIDENTIAL: THIS DRAWING AND ITS CONTENTS ARE CONFIDENTIAL AND THE EXCLUSIVE PROPERTY OF HUBBELL POWER SYSTEMS. NO PUBLICATION, DISTRIBUTION OR COPIES MAY BE MADE WITHOUT THE WRITTEN CONSENT OF HUBBELL POWER SYSTEMS. HUBBELL POWER SYSTEMS UNPUBLISHED ALL RIGHTS RESERVED UNDER THE COPYRIGHT LAWS.	TITLE ALUMINUM STRAIGHT CONNECTOR TUBE TO TUBE
REASON (S) FOR CHANGE: -- DISPOSITION OF MAT'L: --					SIZE DWG NO. CAT / PART / ASSY NO. REV C C-1338 SEE TABLE 17
				DO NOT SCALE THIS DRAWING	DRN BY WDS DATE 1/19/57 SHEET 3 of 3